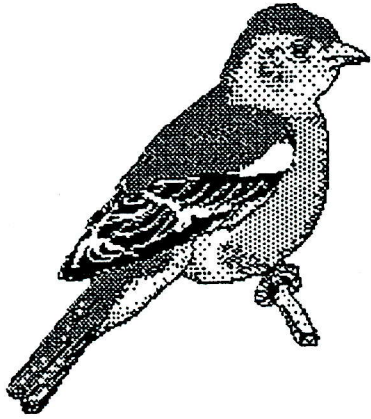


BIRDS IN THE SAGINAW BAY AREA

December 1, 1995 - February 29, 1996



Published by the Chippewa Nature Center

Editor: Steve Rosenberg
25 Rosemary Ct.
Midland, MI 48640
(517) 631-7666
srosenberg@dow.com

Inside:

Our Spring Migrants - The Common Loon S. Rosenberg	2
Hawkfest '96 Hey! It's buried on the bottom corner of page 4 but you will definitely want to check out this short infoarticle.	4
Birding The Internet - HMANA, UMMZ, Birdinks and Optics S. Rosenberg	5
Winter '95-96 Sightings Compiled by S. Rosenberg	
The Hot Birds/Newsletter Info	6
Sightings	7

Our Spring Migrants - The Common Loon by S. Rosenberg

The Spirit Of The Northern Lakes, the Common Loon is a regular migrant through the SBA on its way to the Northwoods. In fact, viewing Common Loons in the SBA in spring is easy if you know where to find them.

Look Up!

In the spring Common Loons are most readily viewed in flight and can be seen from several locations, including: Tawas Point SP, the Au Sauble River Mouth and Grindstone City (check your maps).

The first 2 hours after sunrise will provide the greatest viewing opportunity. Bring a good spotting scope and look out into the bay and be patient.

The peak viewing dates are the last week of April through first week of May, however,

anywhere from April 10th to May 15th is

likely to turn up at least 2 or 3 loons at the migratory viewing spots mentioned above. South winds help for best numbers, but this is not a hard and fast rule. Don't just show up for the loons, most of us waterbird watchers are also looking for grebes, sea ducks, interesting gulls and anything else that might pass by.

Common Loons are readily identified in flight by their large size, slow wing beat and distinctive plumage and flight posture. They are not easily confused with other waterbirds (except other loon species) however, the first loon or merganser you see in flight for the season could require a few moments pause before a confident ID can be established. Don't forget to scan the water as feeding individuals

or groups are not unusual.
Family Ties.

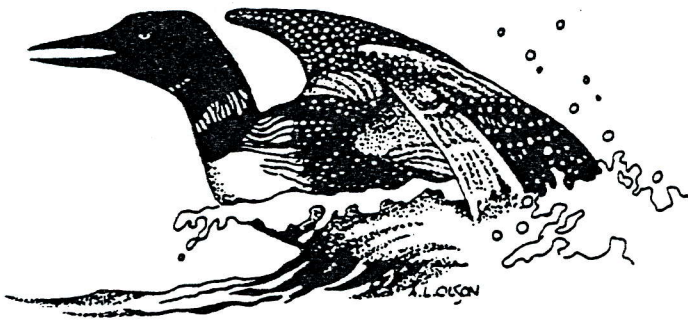
The Common Loon is not the only member of the loon family to pass through the SBA during migration. Spring records of Red-throated Loons are known, although their major migration path in the spring is well to the north. Head to Whitefish Point if you want to observe both loon species-and don't be shy-Red-Throated Loons are not easy to separate from Common Loons in flight. So be sure to

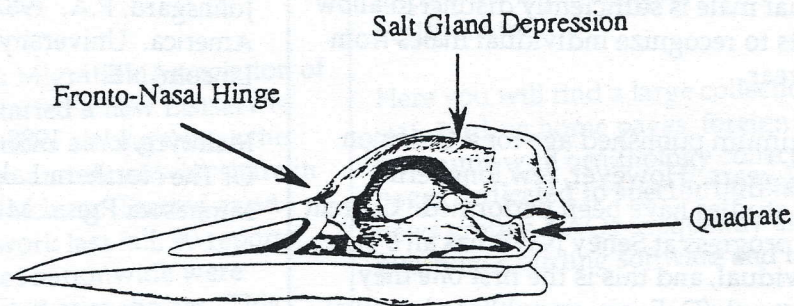
ask the waterfowl counter for help on loon flight identification.

Don't Forget Winter.

It's easy to forget that Common Loons are birds of salt water. As you watch one fly through the SBA think about where they came from-

their oceanic winter habitat-and about their winter survival needs. Loons tend to hug the coasts, coming near shore to feed especially as the tide ebbs, ready to scoop up any fish that stayed close to shore but are being forced out to sea with the tide. Being visual hunters, feeding stops as the sun sets. Food is not enough as water is also an important physiological resource. Like most birds of the ocean, loons have special glands to allow them to drink salt water. Check out the drawing on the next page. Loons have a salt gland attached to the upper part of their skull just behind the eyes. The skeletal drawing shows where the salt glands are attached, while the photograph illustrates on dissected specimens the large size of these glands.





The photo on the left shows a loon skull with the salt glands removed and the photo on the right has the salt glands intact.

Loon Factoids

The familiar, if not famous, yodel of the Common Loon is a call given only by males (don't confuse the yodel with the tremolo given by both sexes). In fact the yodel of an individual male is sufficiently distinct to allow biologists to recognize individual males from year to year.

The maximum published age for a Common Loon is 7 years. However, few long term banding studies have been performed. Current work in progress at Seney NWR has an 8 year old individual, and this is the first one they began to track (D. Evers, unpublished results). Many ornithologists believe that once a loon survives to breed that a life expectancy of 25-30 years may be the norm. Certainly such longevity records are well known for other loon species. Indeed, based on studies of breeding success and juvenile mortality, if adult loons did not live 20+ years the species would decline rapidly.

Like most birds, loons have a hinge (the fronto-nasal hinge) at the base of the upper mandible where it joins to the skull. Check out the drawing on the preceding page. This allows a loon to open its mouth quite wide. They also have a bone called the quadrate at the rear of the skull where the upper and lower mandibles join that allows further opening in a manner similar to our own jaws except the lower jaw of the bird will move forward.

References

Hildebrand, M. 1995. Analysis Of Vertebrate Structure. John Wiley & Sons, Inc. New York, NY.

Johnsgard, P.A. 1987. Diving Birds Of North America. University of Nebraska Press. Lincoln, NE.

McIntyre, J.W. 1988. The Common Loon, Spirit Of The Northern Lakes. University Of Minnesota Press. Minneapolis, MN.

Hawkfest '96

Huron Audubon will have its annual Hawkfest at Port Crescent State Park on Saturday April 27th from 10am-4pm. Come on out to enjoy the hawk flight and to improve your identification skills. Experts will be on hand to help you get the most out of the day. As always there will be a potluck lunch. This year's program features award-winning photographer Dr. Tim Straight. Tim will present a multimedia slide show, "Nature symphony". In addition there will a bird banding demonstration. For more info call Monica Essenmacher at 792-1129. Please RSVP (especially for groups) so Huron Audubon can plan accordingly.

If you have never been there, Port Crescent State Park is near the tip of the thumb between Caseville and Port Austin.

Birding The Internet by Steve Rosenberg

Didn't we have an article on the Internet just a few months ago? Well, the information superhighway is expanding daily and several new resources of interest to the birder are now available.

HMANA- The Hawk Migration Association of North America has started a new Listserv to advance communications among those who study hawk migration and those who share in the hobby of hawk watching. Started as an unofficial e-mail network last fall, 90 reports from 60 hawk watches nationwide were received and distributed over the net. This network is now being formalized and will be the official list for HMANA.

To subscribe to the electronic mailing list send an e-mail to:

listserv@utkvm1.utk.edu

Leave the subject line blank and type the following in the body of the message:

SUBSCRIBE HMANA Your Name

UMMZ Bird Division
The University of Michigan Museum of Zoology is now online. To access the bird division set your web browser to:

<http://www.ummz.lsa.umich.edu/birds/BIRDWEB.html>

Besides learning about UMMZ, check out their links to other Michigan and US sites:

Michigan Birding Home Page
Southeast Michigan Home Page
Shorebird Migration
Electronic Resources on Ornithology

Birdlinks

To access a ton of valuable resources set your web browser to:

<http://www.phys.rug.nl/mk/people/wpv/birdlink.html>

Here you will find a large collection of links to state birding home pages, foreign countries, museums with ornithology collections, web pages dedicated to specific bird families, bird news groups, FAQs (frequently asked questions), birding software and trip reports.

An unbelievable collection of resources! I was able to access several detailed trip reports from selected Mexican cities for Mark Hubinger prior to his trip to Puerto Vallarta, Colima and San Blas in late January. Mark informs me that the detailed directions from these sources allowed him to find some birding locales with much greater ease.

Optics for Birding

Want some of the latest info on binoculars and scopes? Then turn to:

<http://www.aib.com/~edm/optics/optics.html#bvdrs>

Enter at your own risk! You might be surprised which of the expensive models (hopefully not yours) got panned vs. praised.

Surf's Up

If you're not yet online but would like to experience the internet, just give me a buzz and I'll give you a tour.

Winter '96 Report - The Hot Birds

S. Rosenberg

The Winter of '95 may be remembered by most for its early start and record lows, but birders may be hard pressed to have another winter with as many interesting sightings for many years.

Among the highlights (in taxonomic order):

Red-throated Loon	Rare Feb. record
Western Grebe	2cd SBA record
Canada Goose (18,168)	2cd winter high
Wood Duck	6th Feb. record
Harlequin Duck	6th SBA record
Bald Eagle (16)	Ties winter high
Red-tailed Hawk (22)	New winter high
Rough-legged Hawk (15)	New winter high
Merlin	First Jan. record
Merlin	First Feb. record
Gyr Falcon	4th SBA record
Sandhill Crane	1st Dec. record
Thayer's Gull	1st Dec. record
Iceland Gull	New winter early
Snowy Owl	(just interesting)
Long-eared Owl	3rd Feb. record
Short-eared Owl	4th Dec. record
Short-eared Owl	2cd Jan. record
Boreal Owl	2cd SBA record
Northern Saw-whet Owl	2cd Dec. record
Northern Flicker (12)	New winter high
Eastern Bluebird	3rd Jan. record
Pine Warbler	1st Feb. record
American Tree Sp.(273)	New winter high
Field Sparrow	1st Jan. record
Vesper Sparrow	1st Jan. record
Swamp Sparrow	1st Feb. record
Hoary Redpoll	10th SBA record

Just unbelievable!!! This was better than Fall. There were a good variety of overwintering waterfowl, it was an invasion year for Bohemian Waxwings and Common Redpolls, and so much more. All in all 102 species were recorded for the

winter period. Certainly not near the record 119 of winter '93-'94, but in terms of interesting sightings, this was the best winter on record. Of course this is due in no small part to the amazing group of birders who send in their sightings. My winter '95-'96 folder contains more submissions than the spring period did when I first began compiling records 2 years ago! Thank you for taking the time to record your sightings.

Newsletter Info

I'm sure you have all noticed the new format that started in the Fall '95 issue. The SBA seasonal report now features expanded articles on local birds, activities and other news of interest. In addition, the newsletter now appears in a booklet format on folded 11"x17" paper that makes it easier to peruse the many pages of sightings.

All this comes at a small price-it takes a little more effort for our publisher, the Chippewa Nature Center, to assemble the final booklet from the 8.5"x11" pages I provide them. As a result it will take 5-7 days longer for the newsletter to reach you than in the past. Based on the overwhelming positive feedback I received after the Fall '95 issue I must assume the added delay is worth the extra effort. Kudos to everyone who submitted their sightings by e-mail or computer disk. The few extra minutes on your part literally saves me hours and keeps me motivated to compile the sightings. Thanks!!!

Winter '95-96 Report - The Sightings

As is customary, the emphasis is upon early, peak and late dates as well as notable sightings. Sightings that occur outside of the dashed lines in Ron Week's **Birds and Bird Finding in the Saginaw Bay** are considered notable and are published even if the sighting is not the early, late or peak. In addition, reports that seem notable for a particular location even if not the early, late or peak are generally published.

Red-throated Loon				
1	2/7-15	Karn Plant, Ba	RW, JS, GS	Few February records for state!
Pied-billed Grebe				
1	12/24	Footo Dam Pond, Io	BB	
1	1/6	Karn Plant, Ba	JS	
Horned Grebe				
1	2/7	Karn Plant, Ba	RW, JS	
Western Grebe				
1	2/6	Karn Plant, Ba	DD	Second SBA Record!
Documentation included for state compiler.				
Double-crested Cormorant				
4	2/7	Karn Plant, Ba	RW, JS, GS	Overwintering birds.
Several overwinter every year at the Karn Plant.				
Great Blue Heron				
13	12/13	Shiawassee NWR, Sa	DP	Peak
3	ctp	Karn Plant, Ba	JS, GS	
Tundra Swan				
100	12/5	Nayanquing Pt WA, Ba	RW	
1	12/13	Shiawassee NWR, Sa	DP	
1	2/19	Karn Plant, Ba	JS	
Mute Swan				
15 est.	2/17	Karn Plant, Ba	LH, JN	
Common through period.				
Snow Goose				
1	12/30	MCV Pond, Mi	JS, GS, RW	MCBC
1	1/25-2/1	Shiawassee NWR, Sa	DP	
Canada Goose				
18168	12/13	Shiawassee NWR, Sa	DP	2cd Highest Winter Count!
7500	12/30	MCV Pond, Mi	JS, GS, RW	MCBC
Common through period.				
Wood Duck				
1	1/2	Saginaw R, Ba	JS	
1	2/14-tp		GZ	6th February Record!
Green-winged Teal				
1	12/8	Middlegrounds, Ba	JS	
American Black Duck				
360	12/7	Shiawassee NWR, Sa	DP	
Common through period.				
Mallard				
3000	12/30	MCV+Tittabawasee R, Mi	JS, GS, RW	MCBC
2182	2/29	Shiawassee NWR, Sa	DP	Highest single location count.
Common through period.				
Northern Pintail				
1	12/27	Shiawassee NWR, Sa	DP	
2	12/30	MCV Pond, Mi	JS, GS, RW	MCBC
16	2/29	Shiawassee NWR, Sa	DP	1st returns.
Northern Shoveler				
2	12/31	Fish Point WA, Tu	DD	
1	2/7	Karn Plant, Ba	RW, JS	
1	01/20	Towerline Rd.	BB	
1	12/31-2/12	Karn Plant, Ba	DD	
Noted through period from Hu (ME, TB).				
Gadwall				
24	12/30	MCV Pond, Mi	JS, GS, RW	MCBC
American Widgeon				
1	12/20	Middlegrounds, Ba	JS, EK	
Canvasback				
2	12/5	Nayanquing Pt WA, Ba	RW	
1	1/12	Saginaw R, Ba	JS	

Harlequin Duck				
1	1/21	Fountain Creek, Io	BB	6th SBA Record!
Oldsquaw				
3	12/24	Tawas Point SP, Io	BB	
Lesser Scaup				
1	12/1	Middlegrounds, Ba	JS, GS, RW	
Common Goldeneye				
107	12/30	MCV Pond, Mi	JS, GS, RW	MCBC. Extremely low peak.
Noted through period.				
Bufflehead				
1	12/16	Hu	HUCBC	
5	12/30	MCV Pond, Mi	JS, GS, RW	MCBC
1	2/3	Karn Plant, Ba	DD	
8	2/9	Dow Ponds, Mi	RW	5 appeared to overwinter.
Hooded Merganser				
3	ctp	Karn Plant, Ba	JS, GS	
Common Merganser				
175	12/18	Hu	TB	Extremely low peak.
Common through period.				
Red-breasted Merganser				
1	12/5	Hu	TB	
3	12/25	Three Mile Park, Io	BB	
1	1/6	Saginaw R, Ba	GS, JS, M&JH, MB	
Bald Eagle				
16	12/13	Shiawassee NWR, Sa	DP	Ties Winter High Count!
8	12/30	MCV Pond, Mi	JS, GS, RW	MCBC
Noted through period.				
Northern Harrier				
2	2/9	Hu	TB	
Noted through period in lower than usual numbers (ME).				
Sharp-shinned Hawk				
1	12/3	Port Crescent SP, Hu	ME	tp
1	12/12	Hu	TB	
1	12/18	Hu	TB	
1	1/2	Hu	TB	
1	1/13	Hu	TB	
1	01/20	Fountain Creek, Io	BB	
1	2/25	Hu	TB	
A banner winter for Sharpies!				
Cooper's Hawk				
Common through period.				
Red-shouldered Hawk				
1	12/11	CNC, Mi	PS	
1	1/3	Shiawassee NWR, Sa	DP	
Red-tailed Hawk				
22	12/8	Shiawassee NWR, Sa	DP	New Winter High!
22	2/1	Shiawassee NWR, Sa	DP	
Common through period.				
Rough-legged Hawk				
15	2/1	Shiawassee NWR, Sa	DP	New Winter High!
5	2/25	Port Crescent SP, Hu	ME	First migrants.
Common through period.				
Golden Eagle				
1 imm.	1/25	Shiawassee NWR, Sa	DP	
American Kestrel				
Noted sporadically through period.				
Merlin				
1 imm.	1/12	Sa	DP	First January Record!
1	2/25	Port Crescent SP, Hu	ME	First February Record!
The January bird was injured and given to Sandy Miner. The February bird probably represents an extremely early migrant.				
Gyr Falcon				
1	12/28-1/14	Karn Plant, Ba	MW, SJ, RW, JS, GS	4th SBA Record!
First found by Miles.				
Ring-necked Pheasant				
5	12/5	CNC, Mi	JB	Peak.

Ruffed Grouse				
1	12/2	CNC, Mi	PS	
1	12/11	Hu	TB	
1	12/16	Hu	HUCBC	
Wild Turkey				
30	12/25	Meadow Rd, Io	BB	Peak.
American Coot				
1	1/6	Karn Plant, Ba	JS, GS, M&JH, MB	
Sandhill Crane				
1	12/2	Hu	TB	First December Record!
Bonaparte's Gull				
138	12/1	Middlegrounds, Ba	JS	Ties Winter High!
1	12/9	Hu	TB	
Ring-billed Gull				
103	12/7	Shiawassee NWR, Sa	DP	imm. rescue
1	12/18	Hu	TB	
Noted through period.				
Herring Gull				
577	12/7	Shiawassee NWR, Sa	DP	
Noted through period.				
Thayer's Gull				
1	12/11	Saginaw R, Ba	RW	1st winter. First December Record!
1	12/19	Saginaw R, Ba	DP	
1	1/2	Saginaw R, Ba	RW, SJ	This bird was debated as to ID. Sharon
took some photos that convinced them it was a very light 1st winter Thayer's.				
1	1/4	Saginaw R, Ba	RA	
Were all these sightings one bird or two?				
Iceland Gull				
1	12/11	Saginaw R, Ba	RW	Adult. New Winter Early!
1	12/22	Saginaw R, Ba	DP, RA, EK	
1	12/29	Saginaw R, Ba	JS, GS	
Probably multiple sightings of the same bird.				
Glaucous Gull				
6	12/11	Saginaw R, Ba	RW	Peak.
6	12/30	Saginaw R, Ba	JS	BCCBC.
Lesser Black-backed Gull				
1	12/11	Saginaw R, Ba	RW	1st winter.
Documentation included for state compiler.				
Great Black-backed Gull				
4	12/13	Saginaw R, Ba	RW	Three adults, 1 im.
4	12/16	Hu	HUCBC	
1	12/18	Hu	TB	
Rock Dove				
Common through period.				
Eastern Screech-Owl				
1	12/16	Oak Grove, Ba	JS, GS, RH	BCCBC
2	2/22	Midland, Mi	RA	
Great Horned Owl				
1	12/20	1724 E. Salzburg, Ba	M&LB	
2	1/27	1724 E. Salzburg, Ba	M&LB	
1	2/19	CNC, Mi	GZ, EK	heard
Snowy Owl				
1	1/2	Hu	TB	
2 imm.	1/9-13	Hu	TB	
1	2/20	Hu	TB	
Barred Owl				
1	2/6	CNC, Mi	PS	
Long-eared Owl				
1	2/25	Bangor Twp, Ba	JS, GS	3rd Feb. record.
Short-eared Owl				
1	12/9	Saginaw R, Ba	DP	Rare in Dec.-4th Record.
1	12/16	Hu	KO, AB	
2	1/9	Reese, Tu	TB	Extremely rare in Jan.-2cd Record.
Boreal Owl				
1	1/15	Oak Grove, Ba		2cd SBA Record
This bird was recovered near Midland High School and given to Sandy Miner where it died two days later.				

Northern Saw-whet Owl				
1	12/23	Midland, Mi	RA	2cd December Record!
Ron has photos of this one.				
Belted Kingfisher				
1	12/30	MCV pond, Mi	JS, GS, RW	MCBC
Red-headed Woodpecker				
1 tp		St Charles Twp, Sa	DP	
Red-bellied Woodpecker				
Common through period.				
Downy Woodpecker				
Common through period.				
Northern Flicker				
1	1/13	Hu	TB	
12	2/29	Shiawassee NWR, Sa	DP	New Winter High!
Pileated Woodpecker				
1	1/21	CNC, Mi	LH, JN	
1	2/6	CNC, Mi	PS, JL	
Horned Lark				
52	2/15	Shiawassee NWR, Sa	DP	
Common through period.				
Blue Jay				
Common through period.				
American Crow				
325	12/30	Midland, Mi	RA	
Common through period.				
Common Raven				
2	12/25	Towerline Rd.	BB	
1	1/20	Fountain Creek, Io	BB	
Black-capped Chickadee				
Common through period.				
Tufted Titmouse				
Common through period.				
Red-breasted Nuthatch				
Common through period.				
White-breasted Nuthatch				
Common through period.				
Brown Creeper				
Noted through period.				
Carolina Wren				
1	12/14	Green Pt NC, Sa	SD	
Golden-crowned Kinglet				
1	tp	Oak Beach, Ba	ME	
1	12/16	Hampton Twp, Ba	JS	BCCBC
3	12/18	Price NC, Sa	DP	
3	12/24	Iargo Springs, Io	BB	
2	1/20	Corsairs	BB	
Eastern Bluebird				
1	1/20	East Tawas, Io	BB	
3	2/27	Shiawassee NWR, Sa	DP	3rd January Record!
American Robin				
1	tp	Sand Pt, Hu	TB	
Bohemian Waxwing				
4	12/20	Hu	ME	
25	1/21	CNC, Mi	JL	
220	2/1	CNC, Mi	JL, KB	
10	2/2	Midland, Mi	RW	Seen along Eastman Road near the
hospital.				
65	2/10	Hamton Twp, Ba	JS, GS	
52	2/20	Cass City, Tu	TB	
31	2/29	Shiawassee NWR, Sa	DP	
A banner year for Bohemians!				
Cedar Waxwing				
Common through period.				
Northern Shrike				
1	2/7	Kam Plant, Ba	JS, RW	
1	2/11	Kawkawlin River Fl, Mi	LH, JN	

European Starling Common through period.			
Pine Warbler			R&MB
1	2/25	Hampton Twp	
Later seen and confirmed by DD. Documentation included for state compiler.			
American Tree Sparrow			
223	12/13	Shiawassee NWR, Sa	DP
Common through period.			
Field Sparrow			
1	1/13-tp	252 Huron Rd, Ba	G&EP
Vesper Sparrow			
1	2/22	Hampton Twp	DD
Song Sparrow			
2	tp	Shiawassee NWR, Sa	DP
1	12/16	Hu	HUCBC
3	12/18	Hu	TB
Swamp Sparrow			
1	2/9	Shiawassee NWR, Sa	DP
2	2/15	Shiawassee NWR, Sa	DP
Dark-eyed Junco			
8	tp	Midland, Mi	GZ
1	2/5	Shiawassee NWR, Sa	DP
Snow Bunting			
thousands	12/5	Hu	TB
Common through period.			
Red-winged Blackbird			
1	1/14	Essexville, Ba	JS, GS
1	2/5	Shiawassee NWR, Sa	DP
1	2/25	Hu	TB
44	2/26	Shiawassee NWR, Sa	DP
Eastern Meadowlark			
2	12/16	Kinde Lumber, Hu	MW
Common Grackle			
1	1/21	Essexville, Ba	JS
1	2/24	Linwood, Ba	G&EP
1	2/25	Hu	TB
6	2/25	5250 N Center, Sa	BG
Brown-headed Cowbird			
125	1/12	Essexville, Ba	JS
1	1/19	252 Huron Rd, Ba	G&EP
6	2/25	5250 N Center, Sa	BG
Pine Grosbeak			
9	12/25	Meadow Rd, lo	BB
Purple Finch			
1	1/2	Hu	TB
1	2/20	Hu	TB
House Finch			
30		1724 E.Salzburg, Ba	M&LB
Hoary Redpoll			
1	12/30	Homer Twp, Mi	EK, MSt
Documentation included for state compiler. Gene consulted the December 1995 Birding article on Hoary Redpoll identification. Everyone should read this one as most field guides do not adequately cover the topic.			
Common Redpoll			
1	12/9	Midland, Mi	RA
30	1/2-tp	Hu	TB
Fairly common this winter. Noted through end of period.			
Pine Siskin			
2	12/9	Midland, Mi	RA
Noted from Hu by ME.			
American Goldfinch			
9		1724 E.Salzburg, Ba	M&LB
			tp

First February Record!

New Winter High!

First January Record!

First February Record!

First February Records!

Oregon race.

1st returns at SNWR

s

tp

tp

Corrections From Fall '95

Black-crowned Night Heron

17

SNWR, Sa

BG

A typo led to these appearing as 17 Scarlet Tanagers.

Willet

1

8/3

Nayanquing Point WA

BA

Bohemian Waxwing

30

11/21

Wenonah Park, Ba

JS

The 10/21 date was a typo.

Gary Nelkie was omitted from the observers list.

Additions From Fall '95

Monica's report arrived after publication of the Fall newsletter but she had several notable sightings:

Canvasback

1

Monica's 250th Huron County Bird

Merlin

1

8/9

Port Austin, Hu

ME

New SBA Fall Early!

Pine Grosbeak

1

10/28

Oak Beach, Hu

ME

New SBA Fall Early!

Records From Outside The SBA

As a service to SBA birders I will forward sightings from regions in Michigan but outside the SBA to the state compiler along with this newsletter. Please include these on a separate page from your SBA sightings.

OBSERVERS:

Below is a list of those who submitted seasonal surveys for the winter period or those credited for sightings by others.

BA	Brian Allen	M&JH	Mark & Joanne Hubinger
RA	Ron Annelin	SJ	Sharon Johnson
KB	Kyle Bagnall	EK	Eugene Kenaga
MB	Marianne Barrowman	JLi	Janea Little
TB	Tom Beachy	GN	Gary Nelkie
BB	Bob Bell	JN	Judy Nicol
R&MB	Robert & Mary Bell	KO	Kevin Overman
JB	Jeff Bowen	DP	David Peters
AB	Adam Byrne	G&EP	Glenn & Ellen Peterson
M&LB	Mary & Lloyd Buzzard	SR	Steve Rosenberg
JD	Jan Dennett	JS	Joe Soehnel
DD	Dan Duso	GS	Grant Soehnel
ME	Monica Essenmacher	PS	Phil Stephens
BG	Bob Grefe	RW	Ron Weeks
RH	Roger Hill	MW	Myles Willard
LH	Larry Hyman	GZ	Gerald Ziarno

18 seasonal surveys were submitted crediting 35 different observers.

ABBREVIATIONS

Ar	Arenac County
Ba	Bay County
BCCBC	Bay City Christmas Bird Count
CBC	Christmas Bird Count
CNC	Chippewa Nature Center
CP	County Park
DASRBA	Detroit Audubon Society Rare Bird Alert
DDI	Diked Disposal Island
HUCBC	Huron Christmas Bird Count
HCHW	Huron County Hawk Watch
Hu	Huron County
Io	Iosco County
MCBC	Midland Christmas Bird Count
MCV Pond	Midland Cogeneration Venture Pond
Mi	Midland County
NAMC	North American Migration count
NC	Nature Center
NWR	National Wildlife Refuge
Sa	Saginaw County
SBA	Saginaw Bay Area
SGA	State Game Area
SL	Sewage Lagoons
SP	State Park
tp	through period
Tu	Tuscola County
Twp	Township
WA	Wildlife Area

VERIFICATION OF RARE OR RECORD SIGHTINGS:

Rare or record sightings should be documented in order to guarantee acceptance at the local or state level. Documentation refers to a description of the observed field marks that led to the identification and uniquely describes that species. It is in your hands to know when a sighting requires documentation and to provide it. In addition birds that are not unusual but provide an extreme identification challenge (especially when not vocalizing) should be documented. I have no control over the state compiler or other users of these records but can predict that failure to include documentation for a rare or record sighting will almost guarantee it's omission from Michigan Birds and most other publications. To help you decide whether a sighting requires documentation please refer to the accepted standard reference "**Birds and Bird Finding in the Saginaw Bay Area**" by Ron Weeks. This is available at the Chippewa Nature Center, ABA sales or directly from Ron. A rare or record sighting is defined as any occurrence outside of the dashed or solid lines in Ron's book. New peak counts should be documented to let me know if you gave a careful count or just estimated roughly.. For birds with <20 known sightings all occurrences should be documented. I always highlight exceptional sightings in the newsletter with a remark such as, **New Peak Count!** or **New Spring Early!**, so if you haven't already provided information on the sighting please do so once you receive the newsletter. For information on how to provide proper documentation please contact me (often a phone conversation is sufficient).